

# Installation Guide

## AG Pro 75™

Smart Technology™ In-Building  
Wireless 800/1900 MHz  
Adjustable Gain Signal Booster



### Contents:

Antenna Options & Accessories . . . . .	1
Quick Installation Overview . . . . .	2
Installation Diagram . . . . .	3
Before Getting Started . . . . .	4
Finding the Strongest Signal . . . . .	6
Outside Antenna Installation . . . . .	7
Installing the Inside Antenna . . . . .	9
Installing a Wilson Electronics Signal Booster . . . . .	10
Powering up a Wilson Electronics Signal Booster . . . . .	11
Understanding the Signal Booster Lights . . . . .	13
Warnings and Recommendations . . . . .	15
Guarantee & Warranty . . . . .	17
AG Pro 75 Specifications . . . . .	Back Cover

**Note:** This manual contains important safety and operating information. Please read and follow the instructions in this manual. Failure to do so could be hazardous and result in damage to your signal booster.

 **Wilson**®  
Electronics, Inc.



# Installation Instructions for the Following Wilson Signal Booster:

## AG Pro 75™ Smart Technology™ In-Building Wireless 800/1900 Signal Booster

Model # 271265 Part# 801280

FCC ID: PWO271265 IC: 4726A-271265

The term “IC” before the radio certification number only signifies that Industry Canada technical specifications were met.

## How it Works

Wilson Electronics signal boosters are bi-directional devices that deliver service levels consistent with what would be expected in areas of high cell network coverage. They amplify a weak or shadowed signal in mobile, marine and in-building applications. When using a Wilson Electronics signal booster in conjunction with Wilson Electronics antennas, the outside antenna will collect the cell tower signal and send it through the cable to the signal booster. The signal is then amplified and re-transmitted through the inside antenna into the room. Cell phones and cellular data cards in that area then communicate with the improved signal. When a cell phone or cellular device transmits, the signal is received by the inside antenna, amplified by the signal booster and broadcast back to the cell tower through the outside antenna.

## Inside this Package

AC/DC Power Supply



AG Pro 75™ Signal Booster

## Outdoor Antenna Options

To purchase these call Wilson Electronics Sales Department at: 800-204-4104

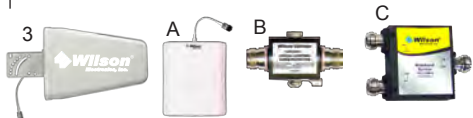
1. 1900 MHz Yagi PCS Antenna (301124)
2. 800 MHz Yagi Cellular Antenna (301129)
3. Wide Band Directional Antenna 700 MHz - 2700 MHz (304411)



## Indoor Antenna Options & Accessories

To purchase these call Wilson Electronics Sales Department at: 800-204-4104

- A. Dual-Band Panel Antenna 700-2700MHz (301155)
- B. Lightning Surge Protector (859902)
- C. 2-Way Splitter (859957)



1

Contact Wilson Electronics Technical Support Team with any questions at 1 800 204 4104 or email: tech@wilson-electronics.com. Hours of operation: 9 am to 5 pm TST.

## Quick Install Overview

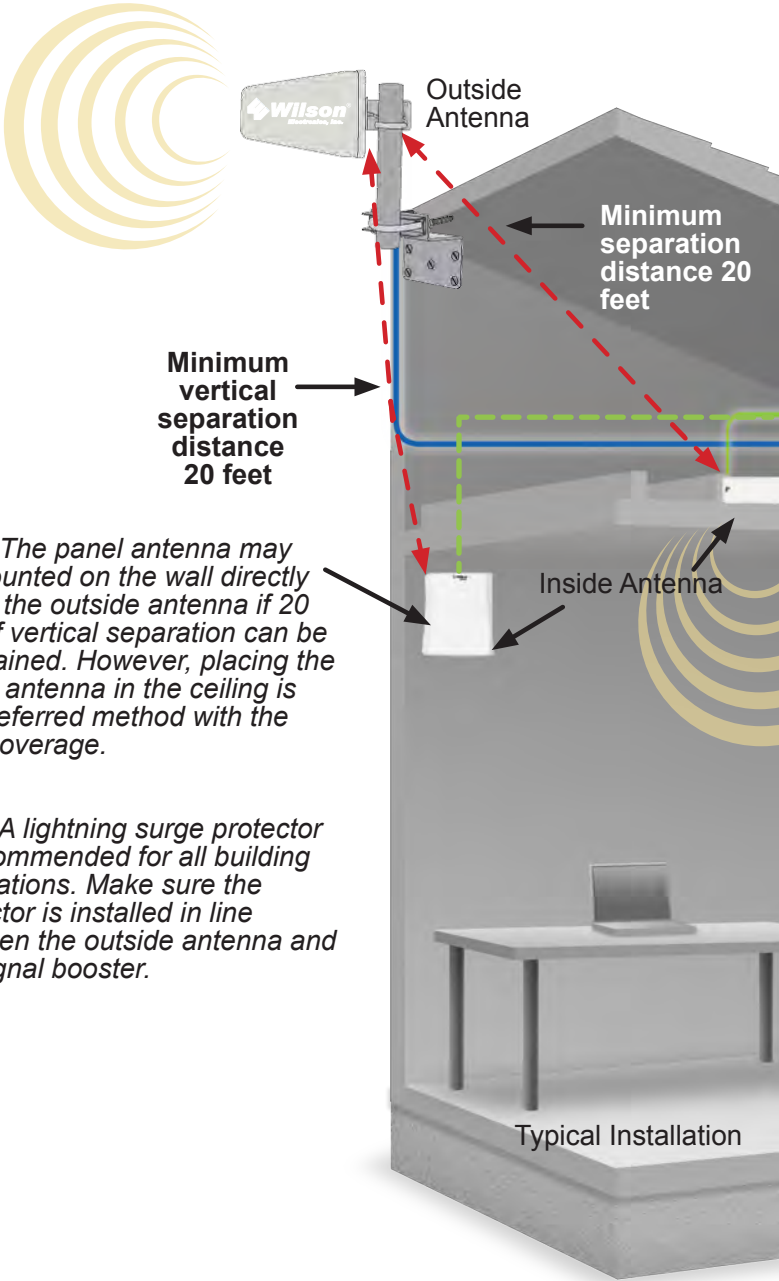
See Installation Diagram on page 3. Contact Wilson Electronics Technical Support Team with any questions at 800-204-4104.

1. Select a location to install the signal booster that is away from excessive heat, direct sunlight, moisture and has proper ventilation. Do not place the signal booster in an air-tight enclosure.
2. Select a location on the roof of the building to install the outside antenna. Use a cell phone in test mode to find the strongest signal from the cell tower. Visit [www.wpsantennas.com](http://www.wpsantennas.com) to find test mode function for your particular cell phone. See page 6.
3. Select a location for the inside antenna, preferably in the center of where the signal needs to be amplified. Separation distance between inside and outside antennas must be a minimum of 20 vertical feet if installed like "Installation Diagram" on page 3. For maximum gain you will need as much as 50 feet of separation.
4. Run the outside antenna cable to the signal booster and attach it to the connector labeled "outside antenna" on the signal booster. Run the inside antenna cable to the signal booster and attach it to the connector labeled "inside antenna" on the signal booster. *Note: Be careful when plugging the connectors in so as not to bend the center pins on the connectors. See page 8 for more information.*
5. Before powering up the signal booster, verify that both the outside antenna and the inside antenna are connected and check that all connections are tight. Lightning surge protection is recommended for all in-building installations. See page 7.
6. The AG Pro 75™ Signal Booster has been packaged with the gain control knobs adjusted to the highest gain position. If one or both of the lights are red please refer to page 14.



**Warning:** Connecting the signal booster directly to a cell phone with use of an adapter will damage the cell phone and the signal booster.

# Installation Diagram

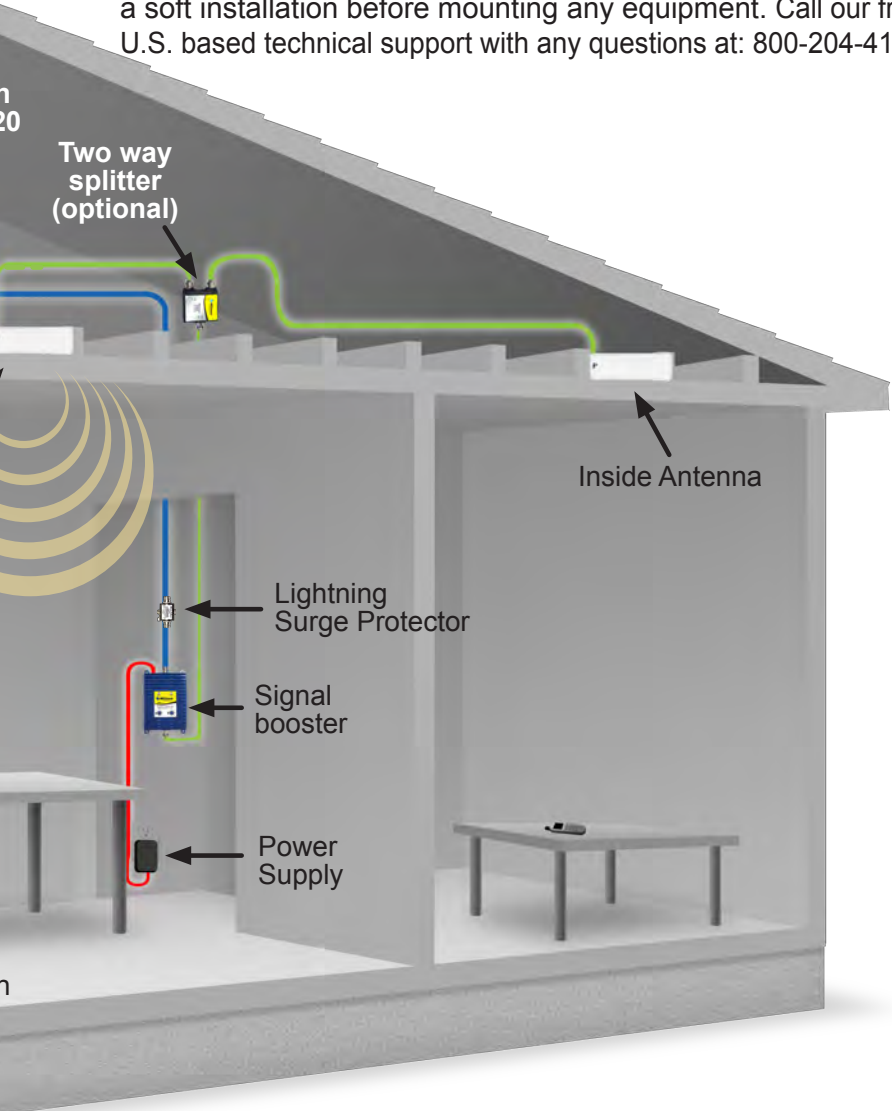


*Note: The panel antenna may be mounted on the wall directly under the outside antenna if 20 feet of vertical separation can be maintained. However, placing the inside antenna in the ceiling is the preferred method with the best coverage.*

*Note: A lightning surge protector is recommended for all building installations. Make sure the protector is installed in line between the outside antenna and the signal booster.*

# Before Getting Started

This guide will help you properly install your Wilson Electronics AG Pro 75™ Signal Booster. **It is important to read through all of the installation steps for your particular application prior to installing any equipment.** Read through the instructions, visualize where all the equipment will need to be installed and do a soft installation before mounting any equipment. Call our free U.S. based technical support with any questions at: 800-204-4104.



# Selecting a Direction for the Outside Antenna

Select a location on the roof of the building to install the outside antenna. Use a cell phone in test mode to find the strongest signal from the cell tower. To get the strongest signal possible, it is very important to set up your outside antenna properly. The inside and the outside antenna must be mounted in such a way that they are able to pick up the best possible cell signal on the outside of the building, and provide the best possible signal on the inside of the building. Mount the outside antenna as high as possible facing the cell tower in an area with the best possible signal coverage. *Note: Never point the front of a directional antenna toward the inside antenna. See Figure 1 on page 12.*

## Reasons for Weak Cellular Signals

Anyone who uses a cell phone or cellular data card knows the frustration of not being able to connect to or maintain a strong cellular signal. When this occurs, it is generally due to one of two reasons:

1. Location of the Nearest Cell Tower – Cell towers are situated to provide broad coverage; however, there are many areas in which signal strength may be reduced by topographic features or by local government restrictions on the height or placement of the towers themselves. Rural areas generally have fewer cell towers than urban regions.
2. Natural and Man-Made Obstructions – Signal strength can also be negatively affected by trees, hills, buildings, weather, and other obstructions. You may be relatively close to a cell tower but still unable to make a call. This often occurs in homes, offices and other buildings in which stucco, concrete or metal walls may block the signal.

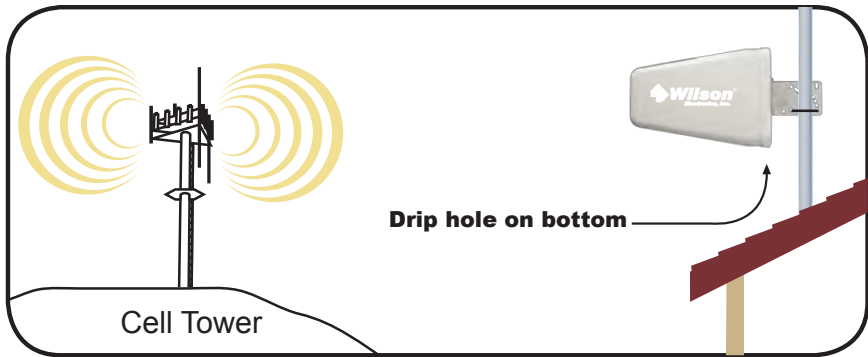
The AG Pro 75 works with two antennas. The inside antenna communicates with your cell phone, and the outside antenna communicates with the cell tower.

The outside antenna receives the cell tower signal and sends it through the coax cable to the AG Pro 75, where it is amplified and re-transmitted much stronger through the inside antenna into the room. When the inside antenna picks up a signal from your cell phone, the signal booster amplifies that signal and transmits it through the cable to the outside antenna and back to the cell tower. *(Note: the AG Pro 75 Signal Booster will only operate if there is an adequate signal to amplify.)*

## Finding the Strongest Signal

When installing your signal booster's outside antenna, aiming it towards the best signal source from your service provider is important. The best way of getting the strongest signal is to have one person on the roof to rotate the outside antenna, which is connected to the signal booster, while the second person is watching the signal strength on the phone inside the building. This allows you to read the signal strength from the cell tower. Turn the outside antenna about 45 degrees at a time. It is preferable to have the phone in the test mode so the actual signal strength can be read as bars are not the most accurate. Go to [wilsonelectronics.com/Support.php](http://wilsonelectronics.com/Support.php) for help in finding the test mode for your phone. Always make sure the person inside the building gives the signal time to arrive and register on the phone. (Between 10-30 seconds for phone to reset to the new signal reading). Signal readings usually appear as a negative number (for example, -86). The larger the number, the more powerful the signal (-75 is stronger [larger] than -84).





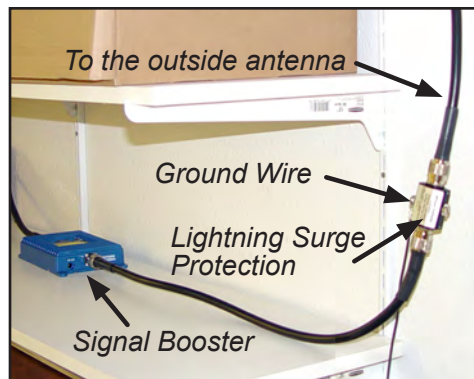
## Outside Antenna Installation

The antenna should be mounted as shown in the illustration above. The included mounting bracket is adjustable and will accommodate pipe diameters from 1.25" to 2" (pipe not included). Mount the antenna so that there is at least 3 feet of clearance in all directions around it. Position the antenna so that it has an unobstructed line of sight to the cellular service provider's strongest signal. Make sure the antenna is not pointing across your own roof or at the inside antenna as this will cause the oscillation protection circuitry to shut down the signal booster.

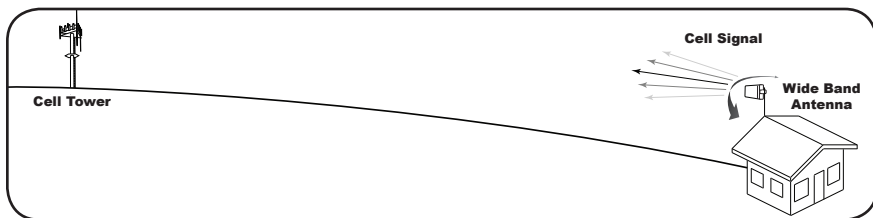
**⚠ Warning:** Lightning protection is recommended for all installations (Wilson Electronics Part #859902). Take extreme care to ensure that neither you nor the antenna comes near any electric power lines.

## Installing Lightning Protection

Install the Lightning Surge Protector (LSP) close to the signal booster. Attach the cable from the outside antenna to the surge protector, using a short length of low loss cable; attach one end to the LSP and the other to the outside antenna connector on the signal booster. Attach a ground wire to the LSP.







## Mounting Tips for Running Outside Antenna Cable

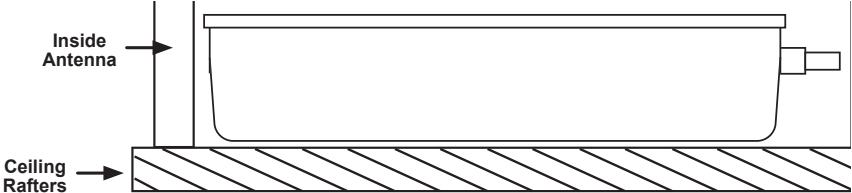
If you are mounting the outside antenna on the roof of your building, we have found that it is easiest to run your cable underneath the down side of your roof's flashing. If you have satellite TV service installed at your home or office, you may be able to follow the same route as the satellite TV cables that are already running from outside of your building to the inside.

After routing the cable, we recommend sealing any areas where the cable passes into the building with silicone or other waterproof sealant to keep your installation from leaking. If you are mounting the outside antenna to the outside wall of your home or building, the simplest way is to run the coaxial cable on the outside of the wall and attach it to the exterior of your home or office. Then drill a hole through the wall where you want the cable to appear on the inside of the building. Before drilling, make sure that there are no electrical outlets, sewer or water pipes, or electrical wiring in the wall that you are about to drill through as this could potentially harm you or damage the building.

After drilling the required hole, run the cable through and seal it with cable bushings or a silicon-type sealant to enclose the hole that you have created. In some instances, it may be possible to run the cable up into the fascia of the attic overhang. In this circumstance, the cable will be accessible in the attic for further routing.

# Installing the Inside Antenna

Find the desired location for the panel antenna. Verify that the panel antenna and the outside antenna have the necessary separation (Minimum of 20 vertical feet if installed with signal booster set at a lower gain, for maximum gain you may need as much as 50 feet of separation). For optimum results the antenna should be mounted at least 6 feet off the ground.



In some cases, multiple inside antennas may be required, for instance if you have multiple rooms with poor signal. A signal may be split by using a splitter. If using more than one inside antenna, a separation of at least 20 feet is necessary between inside antennas. See configuration on page 3.



Optional Wide Band Inside Antenna (Sold Separately)

# Installing a Wilson Electronics Signal Booster

Select a location to install the signal booster that is away from excessive heat, direct sunlight, moisture and that has proper ventilation. Do not place the signal booster in an air-tight enclosure.

Recommended installation locations for in-building signal boosters are:

- On a shelf
- In a closet
- Near a power outlet

*Note: It is important to have adequate air ventilation. Maintain at least 6 inches of clearance from surrounding objects.*

Run the outside antenna cable to the signal booster and attach it to the connector labeled “outside antenna” on the signal booster. Run the inside antenna cable to the signal booster and attach it to the connector labeled “inside antenna” on the signal booster. *Note: For distances of 20 feet or more, use Wilson 400 low loss coax cable to prevent significant signal loss.*

*Note: Be careful when plugging the connector in so as not to damage the center pins on the connectors.*

**Warning:** An inside antenna must have a separation distance from all persons that is at least 15 inches for the panel antenna.



# Powering up a Wilson Electronics Signal Booster

1. Never point the front of a directional outside antenna toward the inside antenna. See Figure 1 on page 12.
2. Ensure that both the outside antenna coax cable and the inside antenna coax cable are connected to the signal booster **and the connections are tight** before powering up the signal booster.
3. Plug the 6-volt power supply into the signal booster input marked “6V DC” (carefully, to avoid damaging the center pin) and then into a wall outlet.
4. If the signal booster has a red light or a blinking red light, please see page 13.
5. If you know that only one frequency band (800 or 1900) is available in your coverage area (or going to be used), reduce the gain control on the frequency band that is NOT in use to the minimum. This will reduce the power consumption of the signal booster.
6. Using multiple signal boosters in one installation could cause interference to the cell tower.
7. Contact Wilson Electronics Technical Support Team with any questions at 800-204-4104 or email [tech@wilsonelectronics.com](mailto:tech@wilsonelectronics.com). Technical Support hours are M-F: 6 am to 7 pm MST.



Figure 1

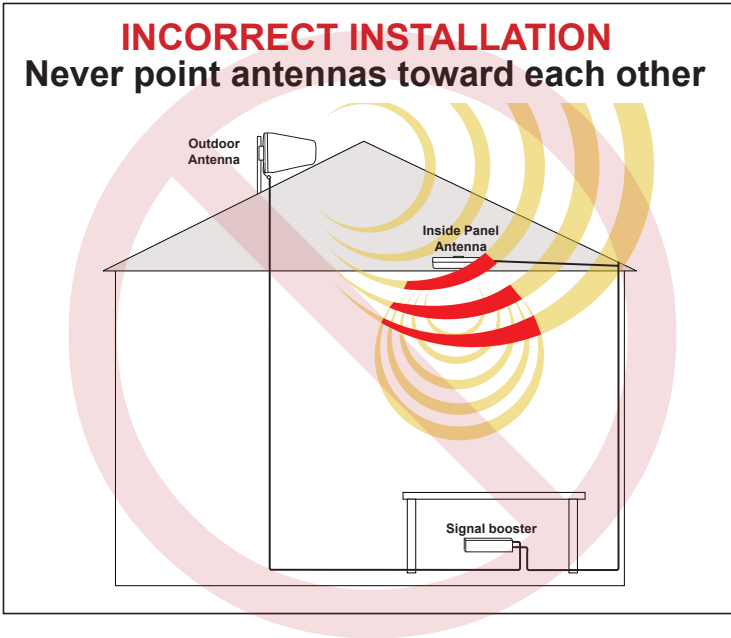
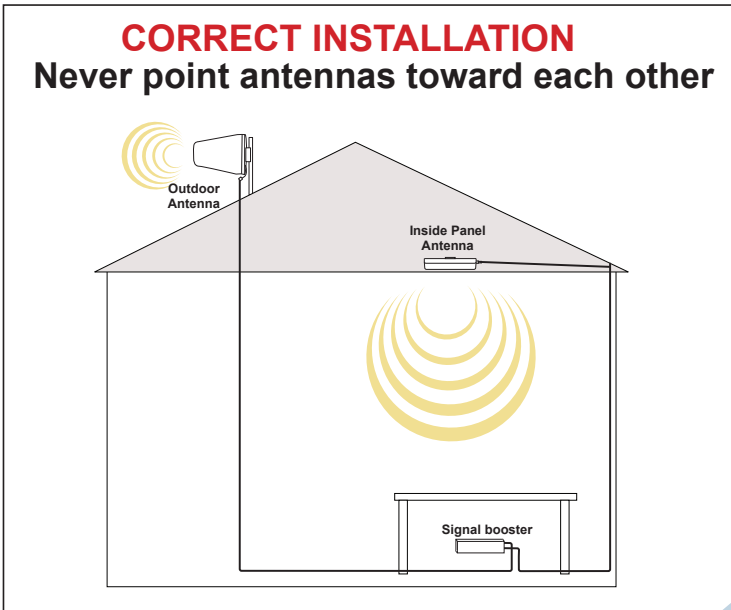


Figure 2



# Understanding the Signal Booster Lights and Troubleshooting

During installation mode the signal booster is resetting itself very quickly to aid the installer. The Signal Booster is equipped with two indicator lights, one for the 800 MHz band and the other for the 1900 MHz band. For the first 15 minutes that the booster is plugged in, it is programmed for a test and alignment period. During this time, both lights will do one of the following 3 things:



*Note: If after the initial 15 minutes you are not done with the installation, the signal booster can be reset and enter installation mode again by disconnecting and reconnecting the power supply from the booster.*

## 1. BLINKING GREEN

If the signal booster is blinking green, the signal booster is operating properly. If you are happy with the coverage area in your building, then you are done. Blinking will stop after the 15 minute installation period.

## 2. BLINKING ORANGE

The signal booster is experiencing receiver overload. The signal booster has protection shut off circuits to prevent the disruption of cell towers. If one or both lights are blinking orange, this indicates that the booster has shut down due to close proximity to a cell tower. First, turn down the gain control on the band that

is blinking until you get a blinking green light. The booster is now working with reduced gain. If the gain is not adequate for good coverage, you will need to turn the gain to maximum and then turn the outside antenna away from the cell tower until the light turns to blinking green. If the booster will not respond turn the gain down 5 dB and move the outside antenna, continue to adjust the gain and the antenna position until the light turns blinking green. Contact Wilson Electronics Technical Support Team for assistance: 800-204-4104.

### 3. SOLID RED

If either of the two lights on the signal booster are solid red, this indicates that the signal booster has shut down on that frequency to prevent an oscillation. First, make sure that all the connections are tight. Then reduce the gain of the booster in small increments by rotating the gain control, counter clockwise, wait 5 seconds between each adjustment for the booster to reset, continue this adjustment until the light turns green. When you are turning down the gain, you are reducing the inside coverage area. If the amount of coverage area is sufficient for your needs and the light is green the installation is complete. If the coverage area is not large enough, it is necessary to increase the separation distance of the antennas by moving them horizontally or vertically farther apart, or both.

If after separating the antennas your coverage area is still too small, contact Wilson Electronics Technical Support Team for assistance: 800-204-4104.

If your installation takes longer than 15 minutes, it is possible to re-enter the installation mode by disconnecting and reconnecting the power supply from the signal booster.

### SOLID GREEN

The indicator lights on the signal booster will be a solid green after the first 15 minute installation period, and the unit is powered up and working properly.



## Warnings and Recommendations

- ⚠ Warning: The directional antenna must always be located so the back or side points to the inside antenna. Never point the front of the outside antenna toward the inside antenna – this is to prevent oscillation.
- ⚠ Warning: Connecting the signal booster directly to the cell phone with use of an adapter will damage the cell phone.
- ⚠ Warning: Use only the power supply provided in this package. Use of a non-Wilson Electronics product may damage your equipment.
- ⚠ Warning: **RF Safety:** FCC regulations require that any fixed outside antenna used with this signal booster may not have gain (less cable loss) that exceeds 15 dBi and must be located at least 30 inches from all people. Inside antennas must not exceed 7 dBi gain (less cable loss) in the 800 MHz band or 10 dBi gain (less cable loss) in the 1900 MHz band and must be located at least 8 inches from all people.
- ⚠ Warning: Verify that both the outside antenna and the inside antenna are connected to the signal booster before powering up the signal booster.
- ⚠ Warning: Do not use an Omni Directional Antenna with the AG Pro 75

*Note: Lightning surge protection is recommended for all in-building installations.*





## About Wilson Electronics

Wilson Electronics, Inc. has been a leader in the wireless communications industry for nearly 40 years. The company designs and manufactures signal boosters, antennas and related components that significantly improve cellular telephone signal reception and transmission in a wide variety of applications, both mobile and in-building.

With extensive experience in antenna and signal booster research and design, the company's engineering team uses a state-of-the-art testing laboratory, including an anechoic chamber and network analyzers, to fine-tune antenna designs and performance. For its signal boosters, Wilson Electronics uses a double electrically insulated RF enclosure and cell tower simulators for compliance testing.

All products are engineered and assembled in the company's 55,000-square-foot headquarters in St. George, Utah. Wilson Electronics has product dealers in all 50 states as well as in countries around the world.

## 30-Day Money-Back Guarantee

All Wilson Electronics products are protected by Wilson Electronics 30-day money-back guarantee. If for any reason the performance of any product is not acceptable, simply return the product directly to the reseller with a dated proof of purchase.

## 1-Year Warranty

Wilson Electronics Signal Boosters are warranted for one (1) year against defects in workmanship and/or materials. Warranty cases may be resolved by returning the product directly to the reseller with a dated proof of purchase.

Signal Boosters may also be returned directly to the manufacturer at the consumer's expense, with a dated proof of purchase and a Returned Material Authorization (RMA) number supplied by Wilson Electronics. Wilson Electronics shall, at its option, either repair or replace the product. Wilson Electronics will pay for delivery of the repaired or replaced product back to the original consumer if located within the continental U.S.

This warranty does not apply to any signal booster determined by Wilson Electronics to have been subjected to misuse, abuse, neglect, or mishandling that alters or damages physical or electronic properties.

RMA numbers may be obtained by phoning Technical Support at 800-204-4104.



Disclaimer: The information provided by Wilson Electronics, Inc. is believed to be complete and accurate. However, no responsibility is assumed by Wilson Electronics, Inc. for any business or personal losses arising from its use, or for any infringements of patents or other rights of third parties that may result from its use.

Copyright © 2011 Wilson Electronics, Inc. All rights reserved.

Operation is subject to the following two conditions: (1) This device may not cause interference and (2) this device must accept any interference, including interference that may cause undesired operation of this device.

One or more of the following U.S. Patent numbers may apply to the Signal Booster in this product – D596,614; D596,615; D563,381; 7,729,669; 7,486,929; 7,729,656; 7,409,186; 7,783,318; 7,684,838; 12,714,994.

## AG Pro 75™ Specifications

IC: 4726A-271265 FCC ID: PWO271265		Dual-Band Wireless 800/1900 MHz Specifications	
Model Number		271265	
Antenna connectors		N-Female	
Antenna impedance		50 ohms	
Dimensions		5.7 x 4.2 x 1.5 inch (14.0 x 10.8 x 3.9 cm)	
Weight		1.27 lbs (0.544 kg)	
Frequency		824-894 MHz / 1850-1990 MHz	
<b>*Passband Gain (nominal)</b>			
	800 MHz * 1900 MHz	65 dB Typical, 70 dB Maximum	
<b>*20 dB Bandwidth (nominal)</b>			
		Downlink	
	800 MHz	45 MHz	
	1900 MHz	88 MHz	
<b>Power Output</b>			
		800 MHz	1900 MHz
	Power output for single cell phone (uplink)	30.8 dBm	30.5 dBm
	Power output for single received channel (downlink)	26.0 dBm	25.2 dBm
<b>*Power output for multiple transmitted channels (uplink)</b>			
		Maximum Power	
The maximum power is reduced by the number of channels:	Number of channels	800 MHz	1900 MHz
	2	24.0 dBm	21.3 dBm
	3	20.5 dBm	17.8 dBm
	4	18.0 dBm	15.3 dBm
	5	16.0 dBm	13.3 dBm
	6	14.5 dBm	11.8 dBm
<b>*Power output for multiple received channels (downlink)</b>			
		Maximum Power	
The maximum power is reduced by the number of channels:	Number of channels	800 MHz	1900 MHz
	2	24.8 dBm	23.7 dBm
	3	21.3 dBm	20.2 dBm
	4	18.8 dBm	17.7 dBm
	5	16.8 dBm	15.7 dBm
	6	15.3 dBm	14.2 dBm
Noise Figure (typical downlink/uplink)		3.5 dB nominal / 6 dB nominal	
Isolation		> 90 dB	
<b>Power Requirements</b>		110-240 V AC, 50-60 Hz, 8 W	

**Notes:**

1. Nominal gain is the maximum gain at any frequency in the passband.
2. Nominal bandwidth is the difference between two frequencies that are adjacent to the passband where the amplification is 20 dB lower than the passband amplification. One of the frequencies is lower than the passband and the other is higher.
3. The Manufacturer's rated output power of this equipment is for single carrier operation. For situations when multiple carrier signals are present, the rating would have to be reduced by 3.5 dB, especially where the output signal is re-radiated and can cause interference to adjacent band users. This power reduction is to be by means of input power or gain reduction and not by an attenuator at the output of the device.
4. The maximum power for 2 or more simultaneous signals will be reduced by 6 dB every time the number of signals is doubled.



3301 East Deseret Drive, St. George UT 84790

For additional Technical Support visit [www.wilsonelectronics.com](http://www.wilsonelectronics.com)

or email at: [tech@wilsonelectronics.com](mailto:tech@wilsonelectronics.com)

Phone: 866-294-1660 Local: 435-673-5021 Fax: 435-656-2432

[www.twitter.com/WilsonCellular](http://www.twitter.com/WilsonCellular) [www.facebook.com/WilsonCellular](http://www.facebook.com/WilsonCellular)